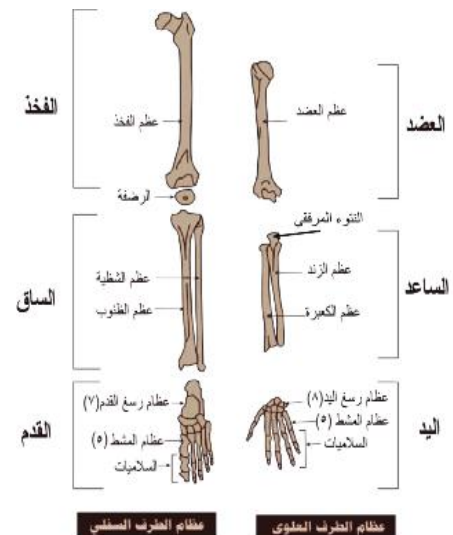
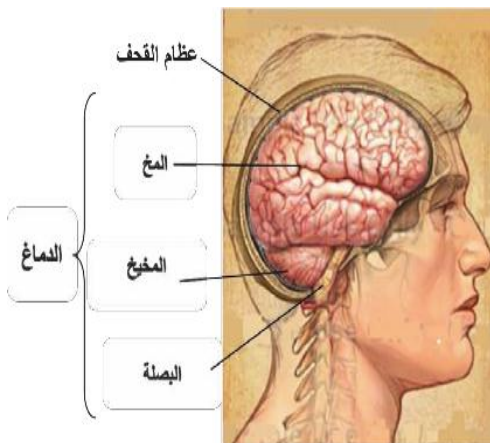
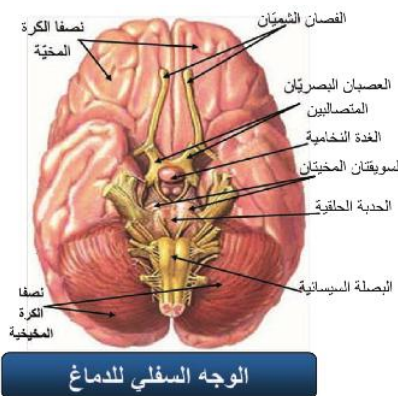
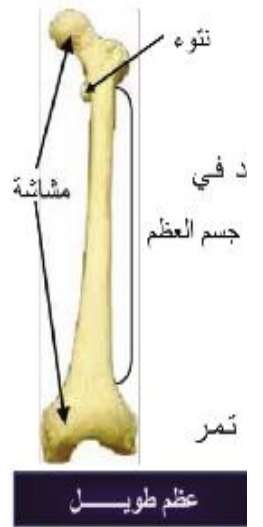
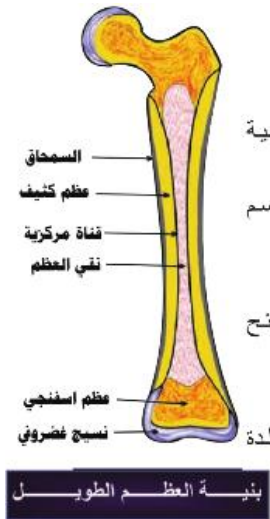
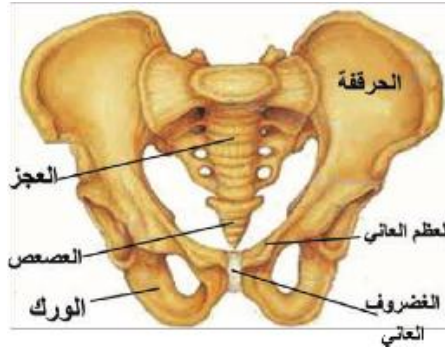
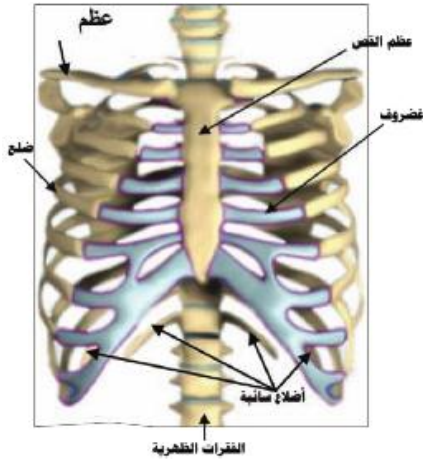
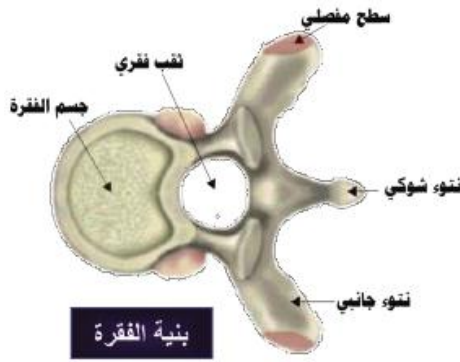
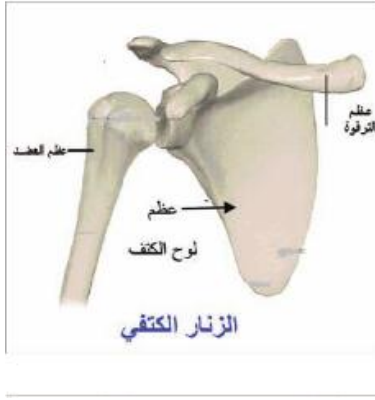
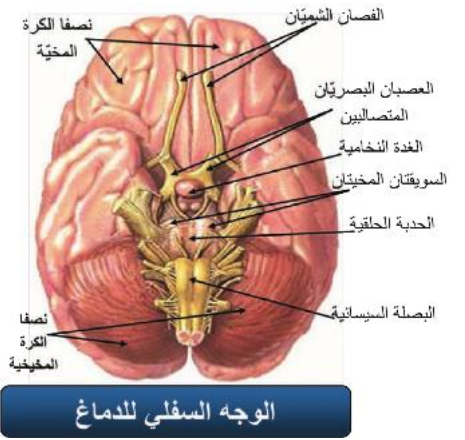
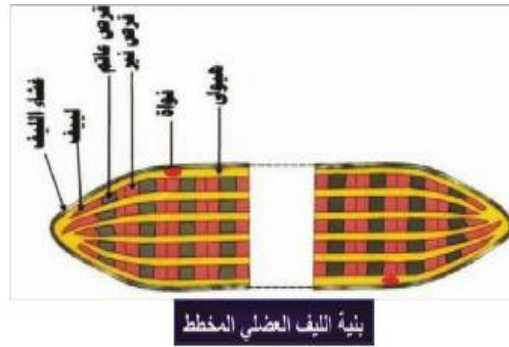
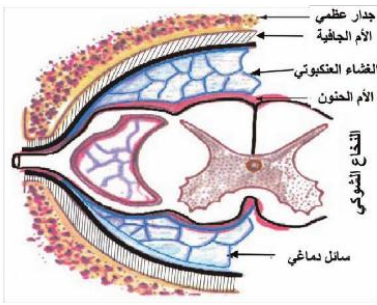
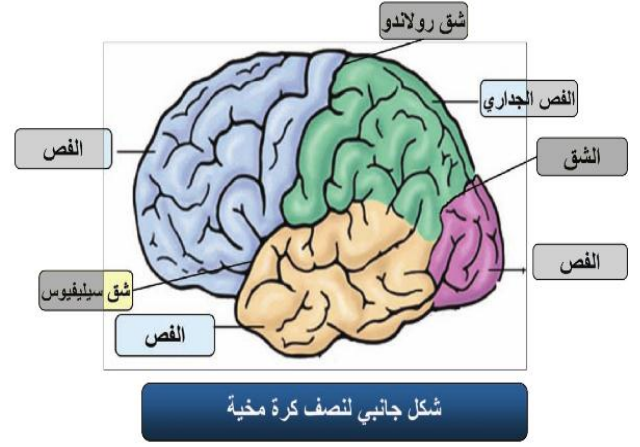
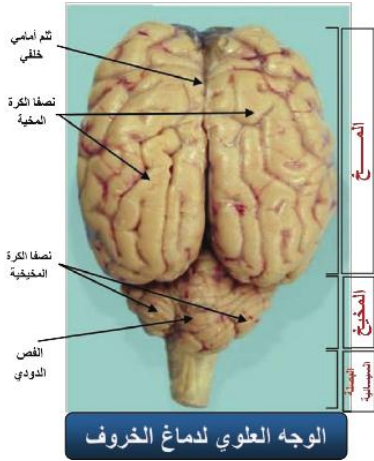


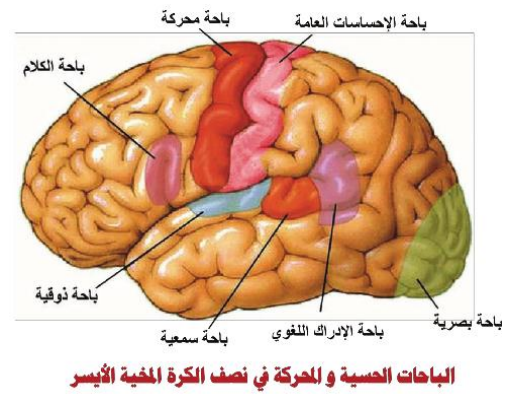
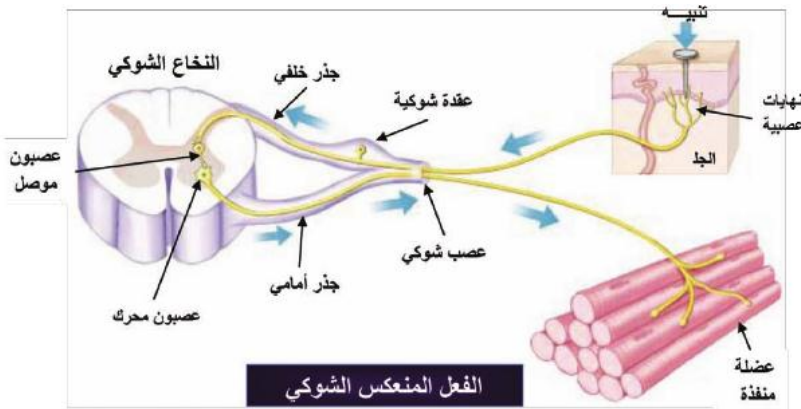
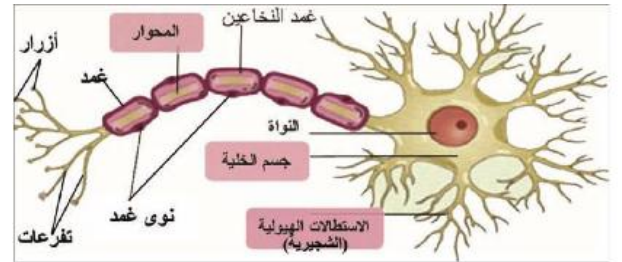
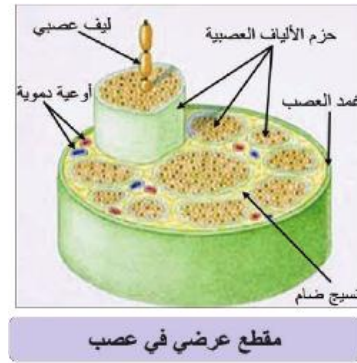
رسومات علم الأحياء للصف التاسع الأساسي ، المدرس قاسم الجوابرة ٠٩٥٢٦٥٧٧٤٣

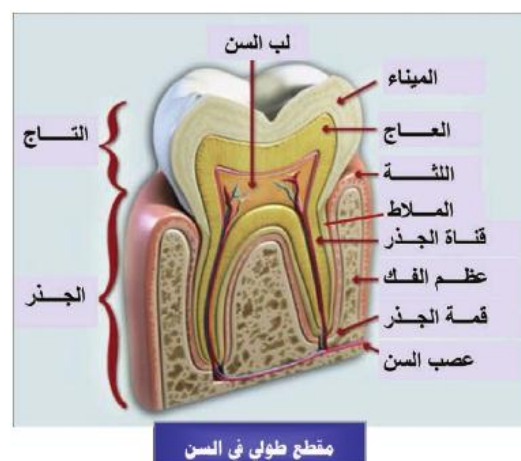
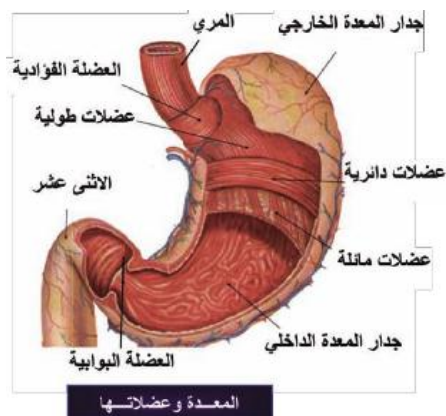
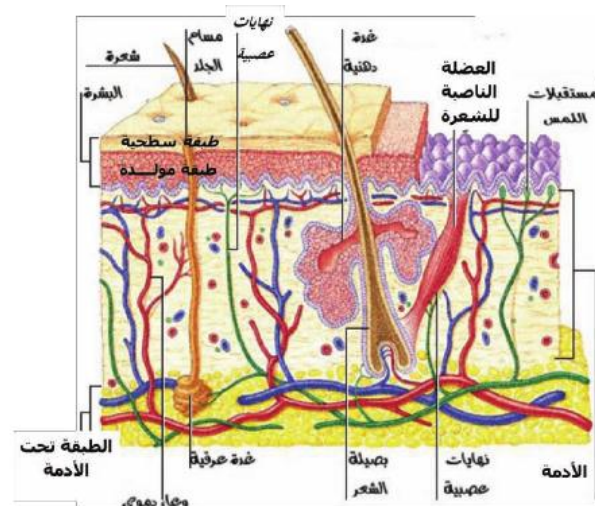
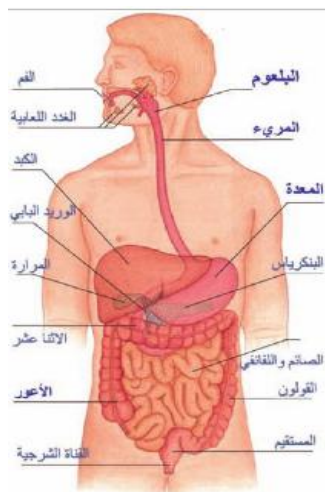
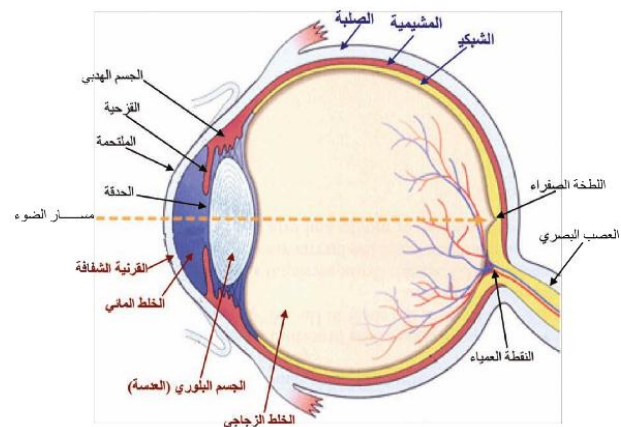
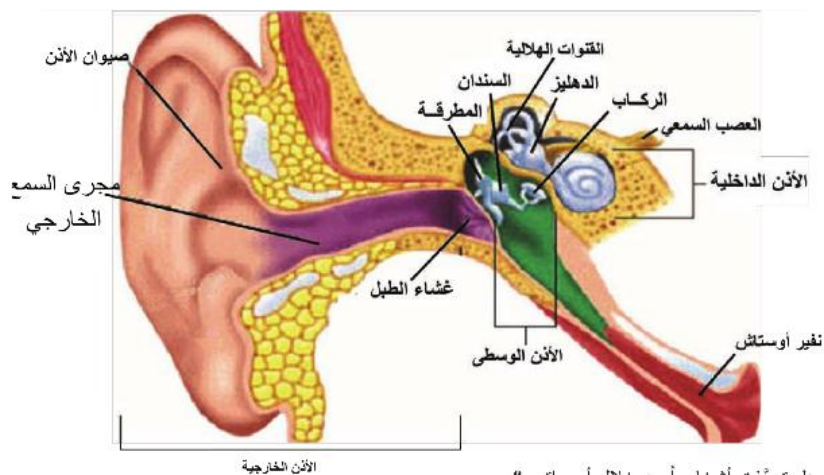


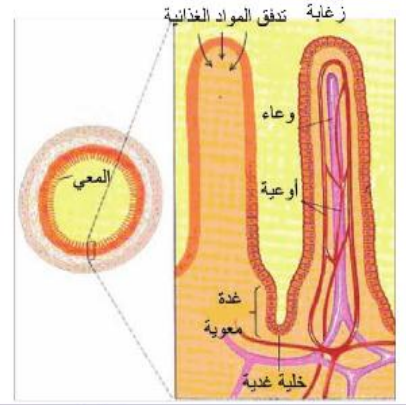
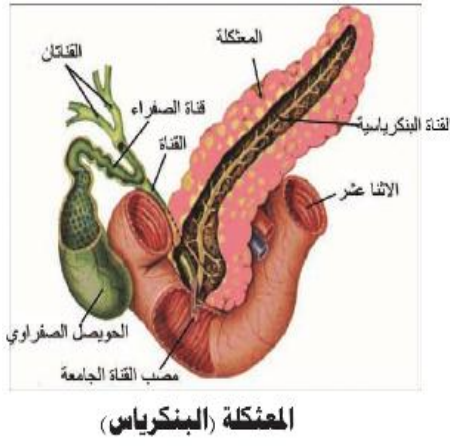
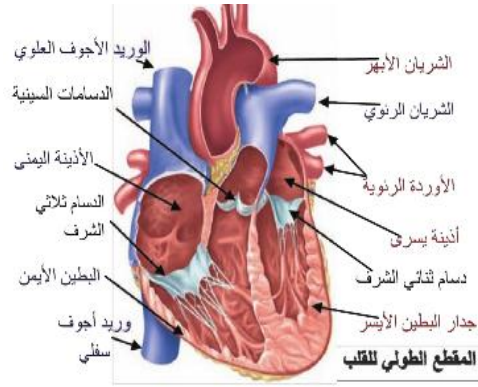
رسومات علم الأحياء للصف التاسع الأساسي ، المدرس قاسم الجوابرة ٠٩٥٢٦٥٧٧٤٣



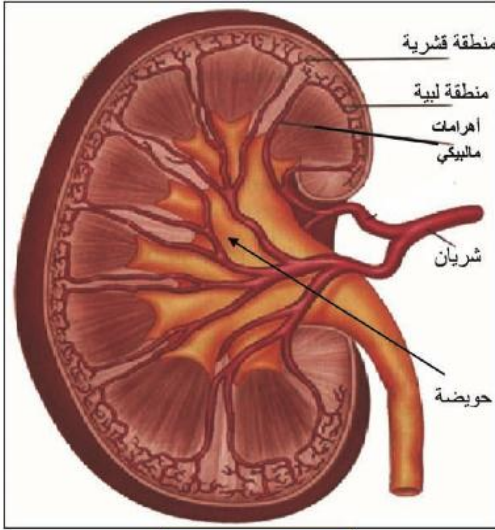
لمع عرضي في النخاع الشوكي يبين الأغشية المحيطة به (السحايا)



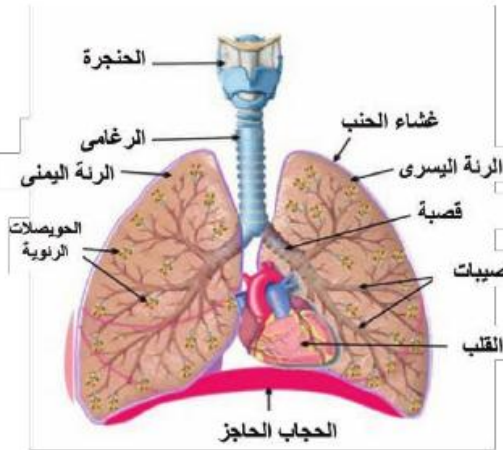




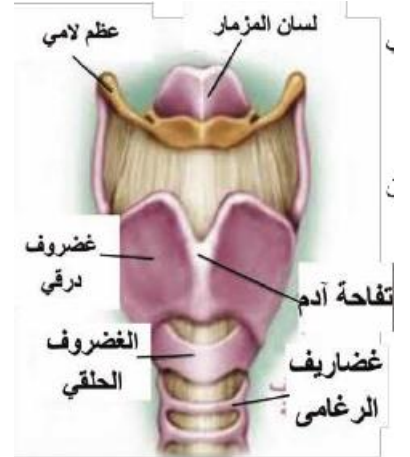
شكل تخطيطي يبين عملية امتصاص المواد الغذائية في المعي الدقيق



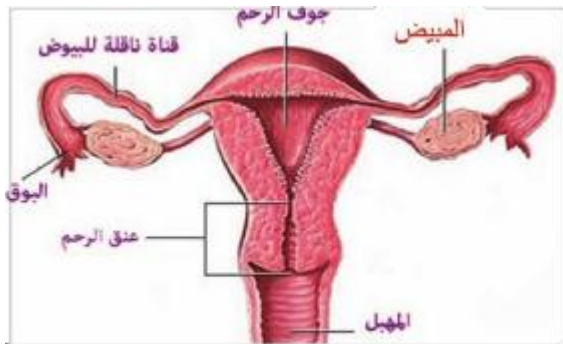
بنية الكلية



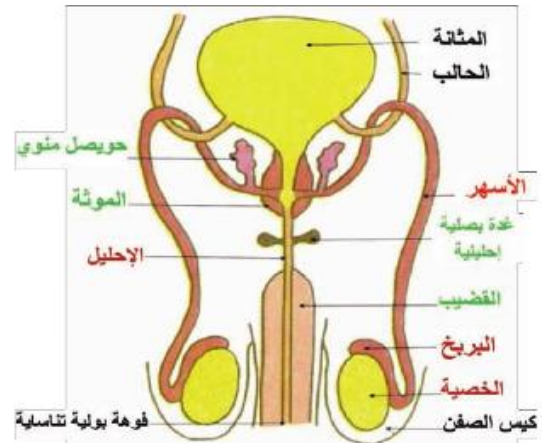
لاحظ الشكل، وتتبع تفرعات القصبة الهوائية في كل رئة



الحنجرة - منظر أمامي



جهاز التنكاثر الأنثوي



جهاز التنكاثر الذكري

